

Figure 2

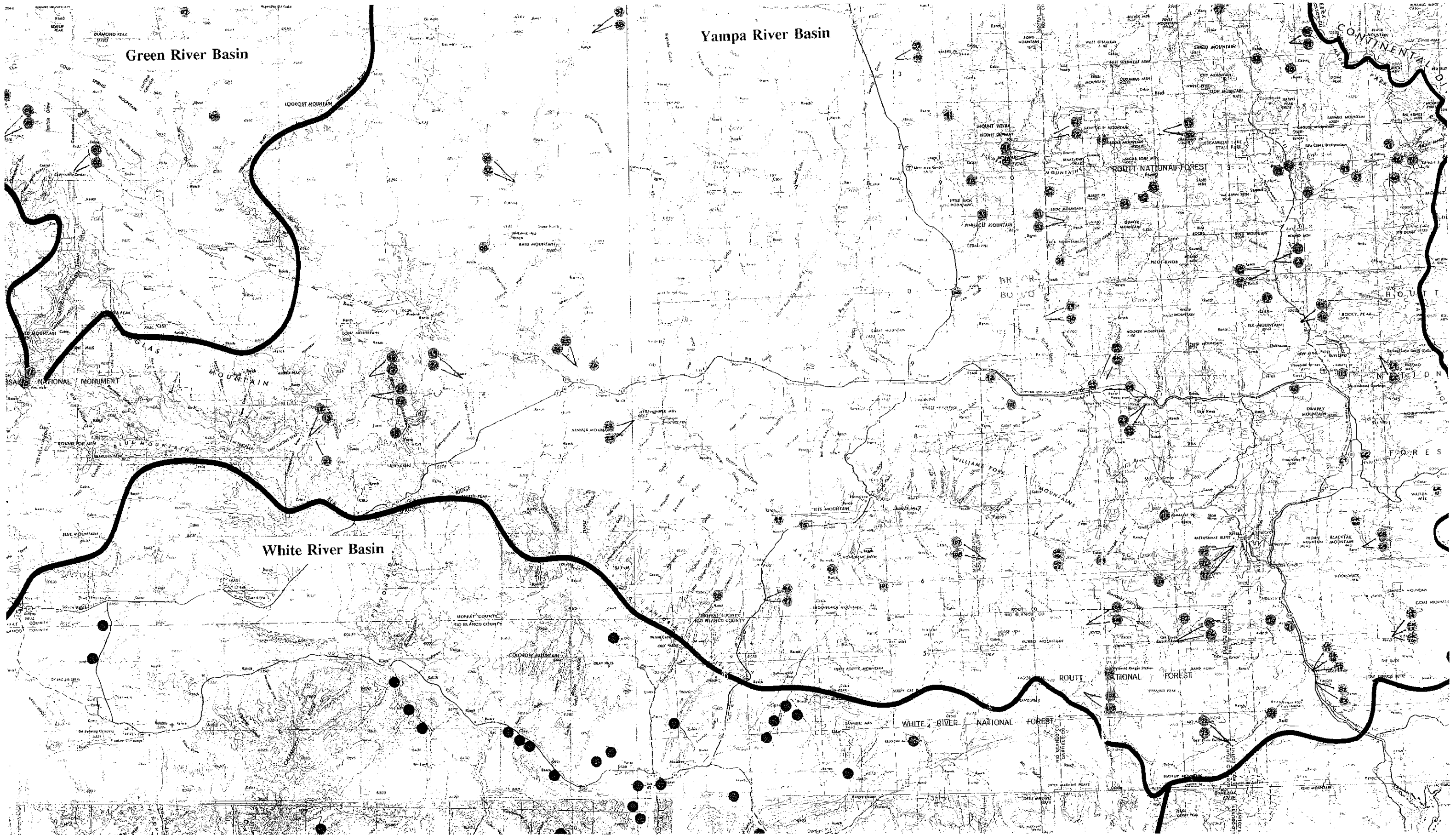
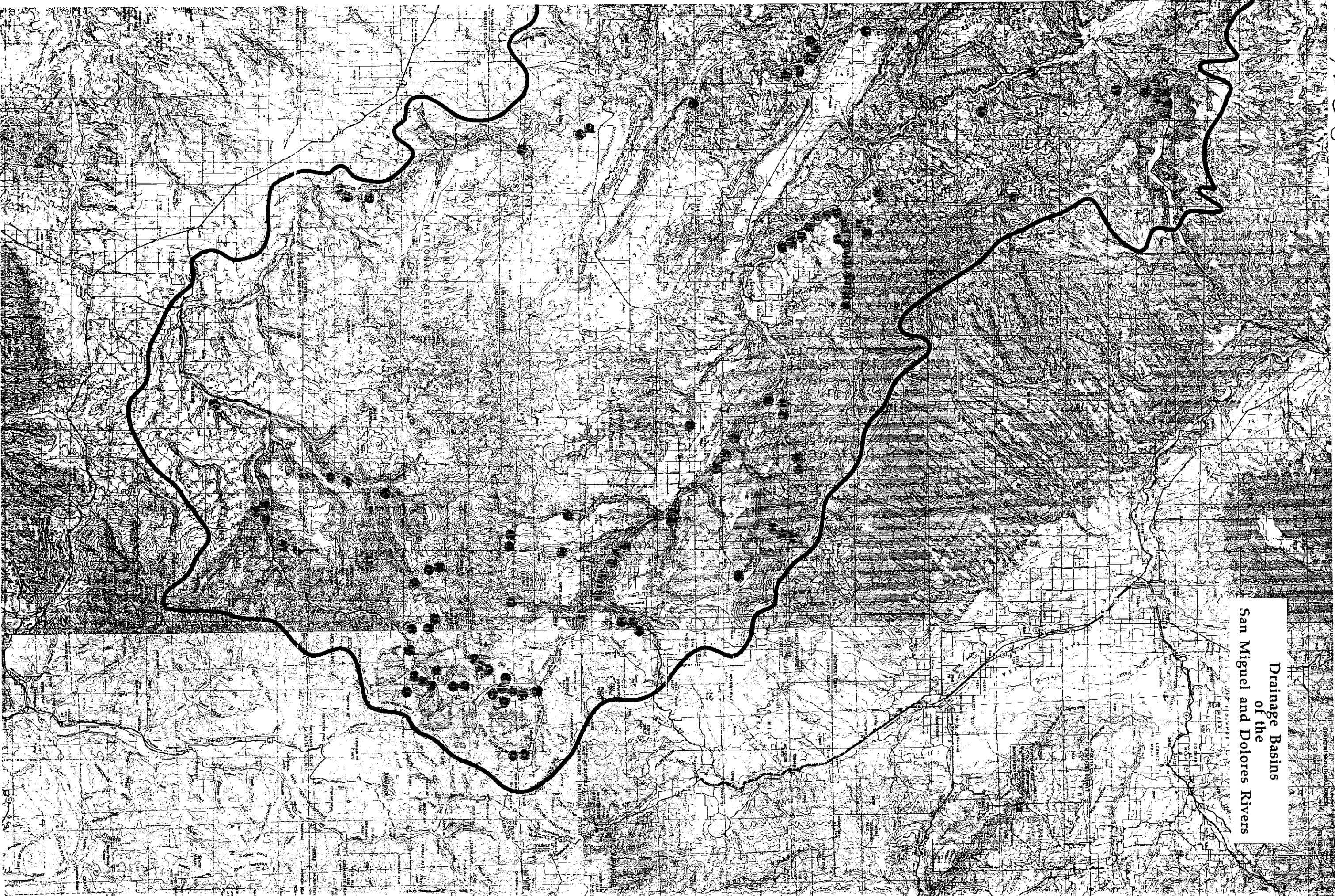


Figure 3



Drainage Basins
of the
San Miguel and Dolores Rivers

Figure 4. Yampa River Basin Agglomerative Cluster Analysis Dendrogram using Euclidean distance and Ward's clustering method. Group numbers indicate the following plant associations (see text for full names): 1= low elevation herbaceous types (IVAX, JUBA, ELPA, SCSP, DISP, MUAS, and EQHY), 2=CAST, 3=CACA, 4=POAN/ALIN, 5=SHAR-LECI, 6=SCAM, 7=ALIN-COSE, 8=PODE/RHTR, 9 & 12=POAN-PIPU/COSE, 10=POAN/AMAL/SMST, 11=POAN/SAEX, 13 & 16=SALA/mf, 14=PIEN-ABLA/LOIN, 15=misc. 17=CAAQ, 18=SAPL/CAAQ, 19=SAMO/CAAQ, 20=CANE, 21=RHTR, 22=ACNE/bare (misc.), 23 & 25=SAWO/mf, 24=SAGE/CARO, 26=CARO, 27=SAEX, 28=SABO/mf, 29= ALIN/mf, 30=PIPU/ALIN, 31= ALIN-COSE, 32=ABLA/ALIN, 33=POAN/COSE & POAN-ACNE/COSE. '*' indicates the stand was placed in another group.

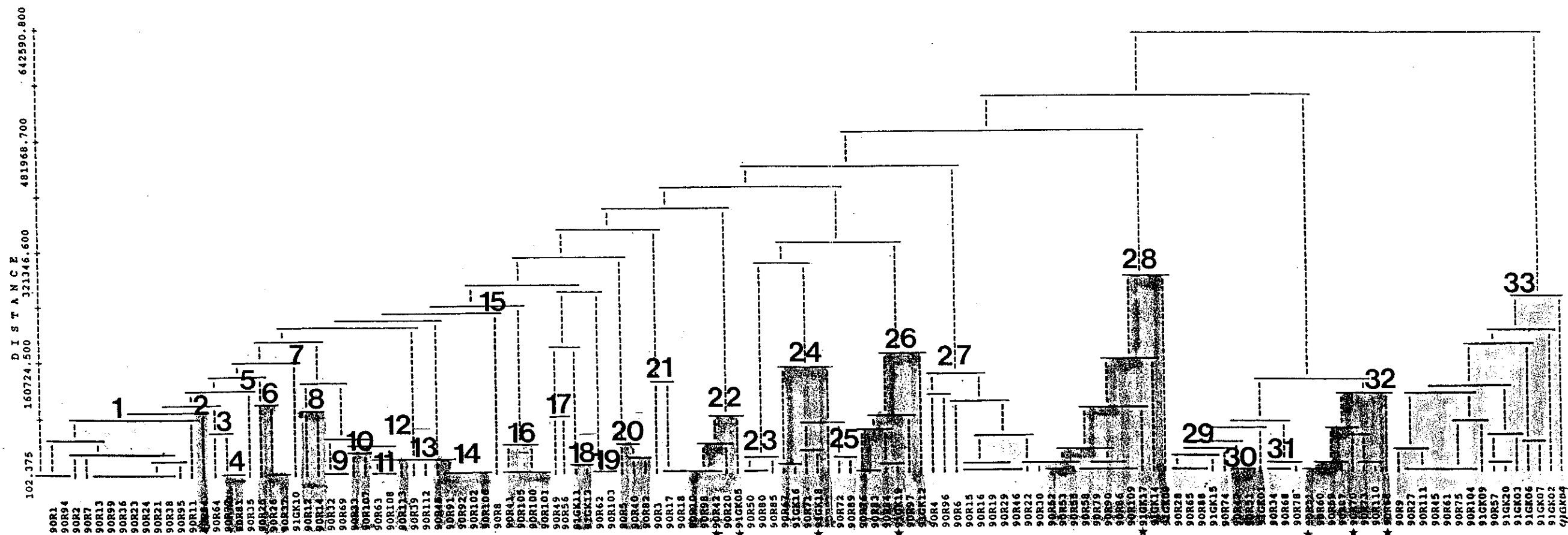


Figure 5. San Miguel/Dolores River Basin Agglomerative Cluster Analysis Dendrogram, using Euclidean distance and average linkage clustering method. Group numbers indicate the following plant associations (see text for full names): 1=POAN/RHTR, 2=SPAI, 3=PIPU-POAN/ALIN-COSE, 4=PODEL (misc.), 5=ACNE/BOEC, 6=POAN-PIPU/COSE, 7=POAN/RHTR & POAN/COSE, 8=RHTR-SALI, 9=POAN/COSE, 10=UnawEEP misc., 11=SAEX, 12=PODE/RHTR, 13=ELPA, 14-15=Carex sp.(misc.), 16=ELPA UnawEEP misc., 17=CAAQ, 18=SAWO/CAAQ, 19=SAPL/CALE, 20=CARO, 21-22=SAMO-SAGE/mf, 23=PIEN-ABLA/mf, 24=PIPU/ALIN, 25=PIPU-POAN/ALIN-LOIN, 26=Misc., 27=SADR, 28=SABR/mf. '*' indicates the stand was placed into another group.

